

Adjustable VLA901i Rigging System

RIGGING FOR JBL-VLAi LOUDSPEAKERS

RIGGING SYSTEM



Cluster Hardware - Overhead Grid sold separately

Complete Family of Adjustable Rigging Components for JBL Professional VLA901i and ASB Loudspeakers, ideal for sports stadiums and concert halls

Adaptive has developed a complete family of rigging components that enable these cabinets to be assembled together and flown in almost every line array configuration. Choose from a variety of field proven rigging components to complete your line array design.

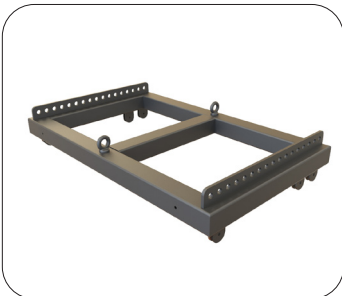
Start with Adaptive's Universal Overhead Grid (next page) that will suspend both the VLAi line array and an ASB sub array together from the venue's super structure. For more localized suspensions, Top Fly Grids are available for both the VLAi and the ASB cabinets (A), which allows them to be suspended and rotated independently.

Interlocking and load-rated Front and Rear Strap kits (B) allow the cabinets to be assembled and locked together, then splayed relative to each other into specific angles, thus directing sound per the venue's acoustic requirements. These Strap Kits also interlock with the Top Fly Bar as well as the lower Pull Back frame (C).

Step Brackets (D) make it possible to join different speaker models together, such as the VLA601i and the VLA901i. The RS-VLA-i-901SB Step Bracket secures these different models together and includes a way to splay them for optimum acoustic result, such as setting up a down tilt.

Pull Backs (C) are used when line arrays need to be raked back into more of a medium to steep angle requirement. The VLA-I Pull Back frame (C) interlocks into the bottom speaker cabinet and, using one or more of the three load-rated pull back points, the entire line array can be pulled back into the desired angle.

Adaptive's Line Array components are precision built and pre fitted before shipping to assure a trouble-free installation. These components have already been installed in major pro football and university stadiums.



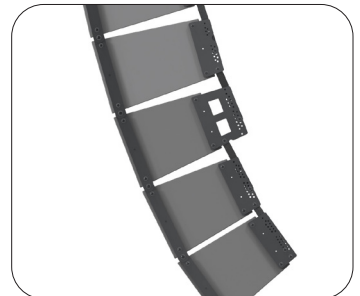
Top Grid (A)



Front / Rear Straps (B)



Pull Back Frame (C)



Step Bracket (D)

Universal Grid RS-56X168-UG

3200 lb. WLL

OVERHEAD LOAD-RATED RIGGING FRAME

RIGGING SYSTEM



Universal Grid with Line Array

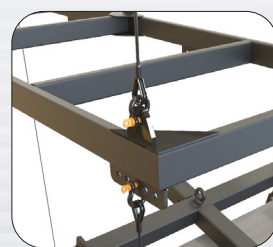
RS-56X168-UG Heavy Duty Universal Grid

Adaptive's Universal Grid is a load-rated heavy-duty frame designed to support overhead rigging of medium and large format loudspeakers, loudspeaker clusters, including line arrays, subs and planar arrays, as well as single box hangs.

Four upper hang points at each corner suspend up to the venue's superstructure and two side attach points provide for anti-sway cables. Lower suspension brackets, each with its own multiple hang point configurations allows for nearly any combination of rigging of loudspeakers.

This Universal Grid comes disassembled for ease of shipping and is constructed of structural tubular steel. Its then black powder coated with a matte finish.

Add the Universal Grid Extension RS-56X42-UG-EXT to rig full sub arrays behind the main array thus allowing the speaker cluster to increase its down angle from the front.



STANDARD FEATURES:

- ▶ Permanently supports mid-size and large clusters
- ▶ Easy Installation - goes up in minutes
- ▶ Rugged black powder coat finish

OPTIONAL ACCESSORIES:

- ▶ See overhead hardware data sheet
- ▶ See wire rope data sheet
- ▶ See safety cable data sheet
- ▶ RS-56X42-UG-EXT Frame Extension

SPECIFICATIONS:

Materials: Structural steel

Finish: Powder coat

Color: Black

WLL: 3200 lb / 1455 Kg using 4 rigging points

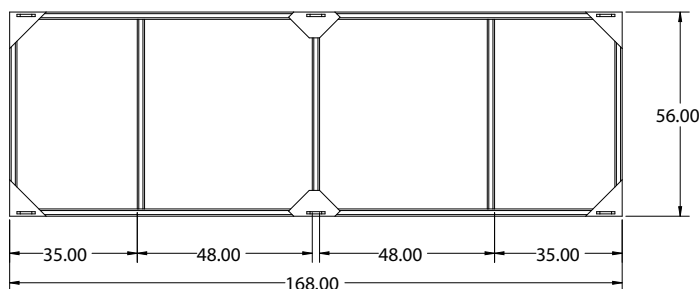
WLL: 5000 lb / 2272 Kg using 6 rigging points

Design Factor: 5:1

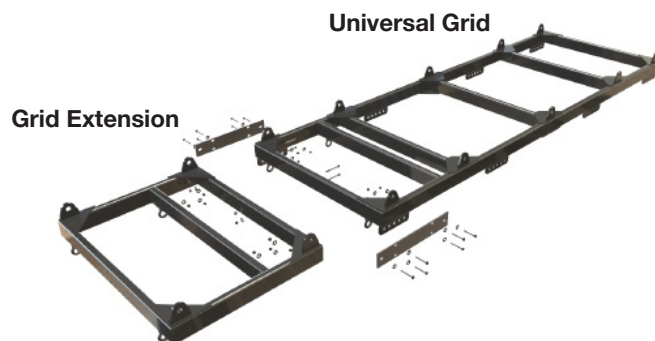
Content: 1 Universal Grid

PACKAGE CONTENTS:

1 pc. Universal Grid

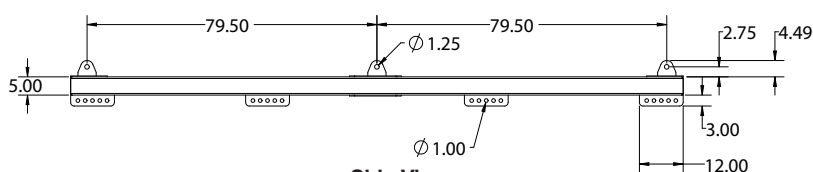


Top View

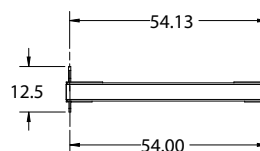


Grid Extension

Universal Grid



Side View



Front View

Adaptive Technologies Group
1635 E. Burnett Street | Signal Hill, CA 90755 USA
Ph: 562.424.1100 | Fax: 562.424.3520
www.adaptivetechgroup.com



ALWAYS INSTALL SAFETY CABLES

WARNING: Mounting and/or suspension of audio and video equipment requires experienced professionals. Improperly installed loudspeakers can result in property damage, personal injury and/or liability to the installing contractor.



Sub Grid RS-56X42-UG-EXT

2000 lb. WLL

EXTENSION FOR OVERHEAD RIGGING FRAME

RIGGING SYSTEM



Universal Grid with Extension

RS-56X42-UG GRID EXTENSION

Attach this optional one piece welded extension frame to the RS-56X168-UG Universal Grid to provide a safe suspension platform for medium to large clusters of subs. It comes equipped with a structural splice kit that permanently joins the extension frame to the main grid. Only simple hand tools are required.

Once attached, the assembled Grid and Extension frames are suspended under the venue's super structure from strategically placed rigging points. The sub cluster is then rigged under the extension from its own Top Grid leaving plenty of room for the main line array cluster to be raked back toward the subs into its optimum position. This extension frame is constructed of tough tubular steel alloy and treated to a rich lasting black powder coat finish.



Grid Frame

STANDARD FEATURES:

- ▶ Permanently supports medium and large sub clusters
- ▶ Secures to Universal Grid
- ▶ Rugged black powder coat finish

OPTIONAL ACCESSORIES:

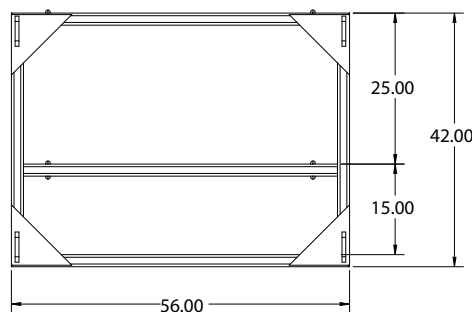
- ▶ See overhead hardware data sheet
- ▶ See wire rope data sheet
- ▶ See safety cable data sheet

SPECIFICATIONS:

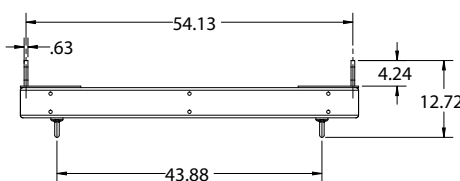
Materials: Structural steel
Finish: Powder coat
Color: Black
WLL: 2000 lb / 909 Kg
Design Factor: 5:1

PACKAGE CONTENTS:

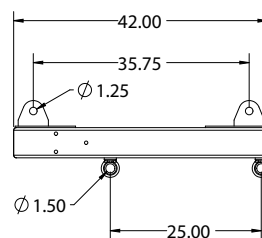
1 pc. Universal Grid Extension
1 set Splice brackets & hardware



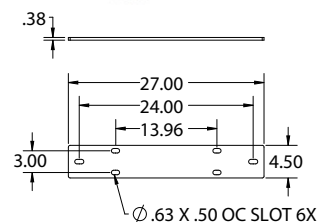
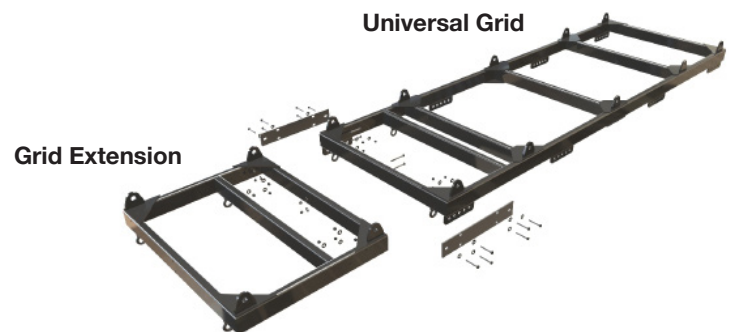
Top View



Front View



Side View



Adaptive Technologies Group
1635 E. Burnett Street | Signal Hill, CA 90755 USA
Ph: 562.424.1100 | Fax: 562.424.3520
www.adaptivetechologiesgroup.com



ALWAYS INSTALL SAFETY CABLES

WARNING: Mounting and/or suspension of audio and video equipment requires experienced professionals. Improperly installed loudspeakers can result in property damage, personal injury and/or liability to the installing contractor.



TOP GRID RS-VLAI-6/901TG

3200 lb. WLL

TOP GRID RIGGING SYSTEM VLA601i & VLA901i

RIGGING SYSTEM



RS-VLAI-6/901TG TOP GRID

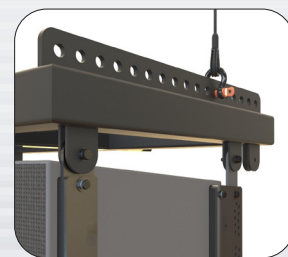
The RS-VLAI-6/901TG Top Grid assembly will fly up to 11 VLA901i loudspeakers or 10 VLA601i loudspeakers clustered in a row into a line array configuration. Simply secure the front and rear speaker Straps Kit of the top speaker cabinet permanently underneath the Grid's four load-rated interconnecting receptacles.

Rigging Rails on the left and right sides of the Grid's frame allow the entire cluster to be suspended and down tilted via multiple front-to-back rigging points. Place the cluster into a dead hang or tilt it down, up to 25° degrees.

Two additional hang points are included to make the installation easier, one at the front center and the other at the rear center to be used for hoisting the cluster into position so that the permanent suspension cables can be secured.

This easy to assemble kit comes with two load rated pivoting side straps that secure to the rear sides of the VLAI cabinet and interlock up to the side straps of the next VLAI cabinet.

Fly clusters in medium to steep angles using the Universal Grid RS-56X168-UG. See data sheet for more details.



STANDARD FEATURES:

- ▶ Supports up to 10 VLA601i Loudspeakers
- ▶ Supports up to 11 VLA901i Loudspeakers
- ▶ Multiple Rigging Points provide up to 25 degree angle down tilt
- ▶ Secure connection to speakers
- ▶ Supports Permanent Installations

OPTIONAL ACCESSORIES:

- ▶ See Overhead Universal Grid RS-56X1168-UG data sheet.
- ▶ See overhead hardware data sheet
- ▶ See wire rope data sheet
- ▶ See safety cable data sheet

SPECIFICATIONS:

Materials: Structural steel

Finish: Powder coat

Color: Black

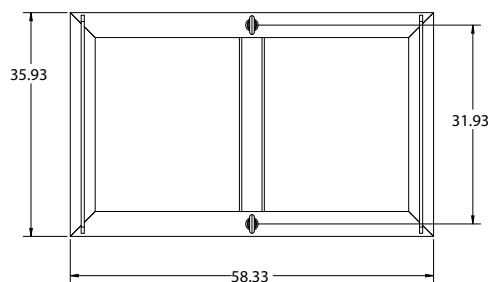
Tilt Angle: 25° degrees

WLL: 3200 lb / 1455 Kg

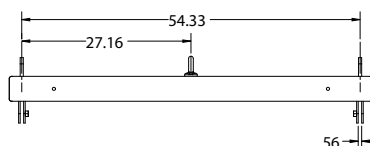
Design Factor: 5:1

PACKAGE CONTENTS:

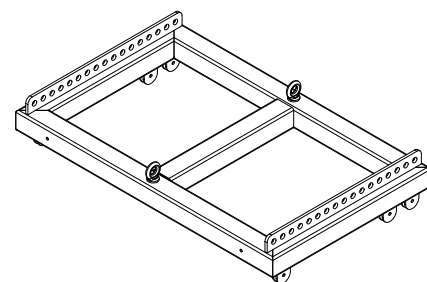
- 1 pc.** Top Grid and hardware
- 2 pcs.** Rear links and hardware



Top View



Front View



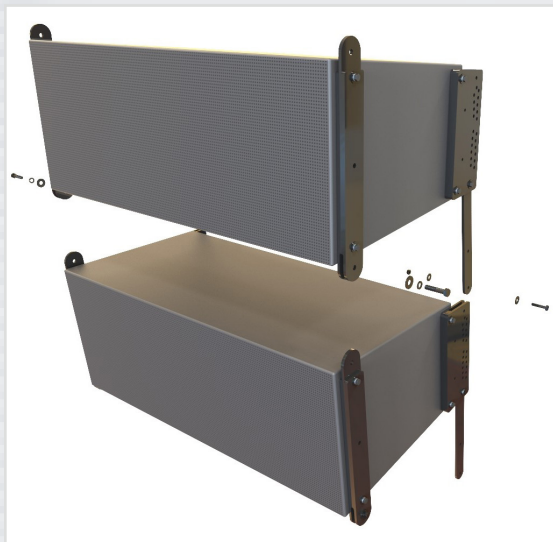
Side View

STRAP KIT RS-VLA-i-901-SK

3200 lb. WLL

FRONT AND REAR ADJUSTABLE SPEAKER STRAP KIT

RIGGING SYSTEM



RS-VLA-i-901-SK STRAP KIT

Assemble JBL's VLA901i line array loudspeakers for desired coverage in the horizontal orientation, up to 11 cabinets in a row using Adaptive's adjustable interconnecting Strap Kits.

This relatively easy-to-assemble rigging kit comes with two pivoting connector straps that secure to the fly points of the front of the VLA901i speaker cabinets, which interlock into the front straps of the cabinet above and below it.

Two adjustable rear Strap Kits secure to the rear fly points of the speaker which allows the speaker cabinet to interlock with speakers above and below into their desired angles, from tight-pack out to 10 degrees and in 1° and 1/2° degree increments up to 9.5°.



Front Strap



Rear Strap

These Strap kits connect to the front and rear receptacles of the Top Grid, which provides a safe cluster rigging structure while allowing the entire cluster to be tilted up or down for precise sound coverage.

They will also connect with the RS-VLA-i-901-PB Pull Back assembly for when medium to very steep down tilt angles are required.

In addition, Strap Kits can interlock into the Step Bracket, which steps down from VLA601i to the VLA901i loudspeaker. This provides additional close-range coverage by allowing the VLA901i loudspeaker to be suspended under the VLA601i cabinet.

STANDARD FEATURES:

- ▶ Supports VLA901i Loudspeakers
- ▶ Secures to upper and lower speakers
- ▶ Supports Permanent Installations
- ▶ Adjusts in half-degree increments, up to 9.5°

OPTIONAL ACCESSORIES:

- ▶ See Top Grid RS-VLAi-6/901TG data sheet
- ▶ See Pull Back RS-VLAi-6/901PB data sheet
- ▶ See overhead hardware data sheet
- ▶ See wire rope data sheet
- ▶ See safety cable data sheet

SPECIFICATIONS:

Materials: Structural steel

Finish: Powder coat

Color: Black

Tilt Angle: 0-10° degrees

WLL: 3200 lb / 1455 Kg

Design Factor: 5:1

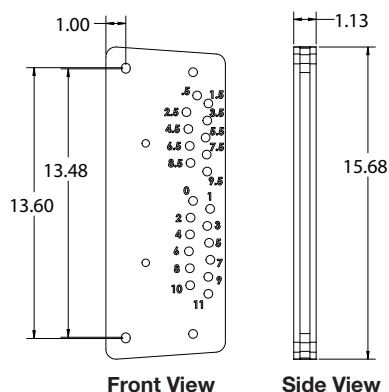
PACKAGE CONTENTS:

2 pcs. Front Straps and hardware

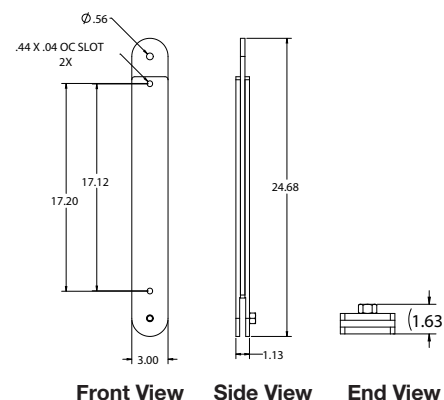
2 pcs. Rear Straps and hardware

2 pcs. Rear links and hardware

Rear Strap



Front Strap



PULL-BACK RS-VLAI-6/901PB

1800 lb. WLL

PULL BACK FRAME FOR VLAI LOUDSPEAKERS

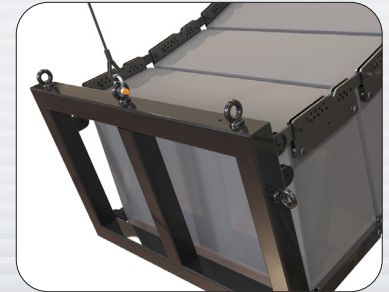
RIGGING SYSTEM



RS-VLAI-6/901PB PULL-BACK

Place clusters into a medium or steep down angle by pulling up on the bottom speaker with the RS-VLAI-6/901PB pull-back frame. This frame locks into the bottom Strap Kit connectors and provides two outer suspension points, as well as one centrally placed.

The RS-VLAI-6/901PB attaches to the bottom of the cluster with four load-rated bolt assemblies and pulled back with wire rope assemblies (supplied by others) that secure to the pull-back points with load rated 1/2" or 5/8" shackles.



STANDARD FEATURES:

- ▶ Supports VLA601i & VLA901i Loudspeakers
- ▶ Secures to the bottom of the speaker cluster
- ▶ Supports Permanent Installations

OPTIONAL ACCESSORIES:

- ▶ See overhead hardware data sheet
- ▶ See wire rope data sheet
- ▶ See safety cable data sheet

SPECIFICATIONS:

Materials: Structural steel

Finish: Powder coat

Color: Black

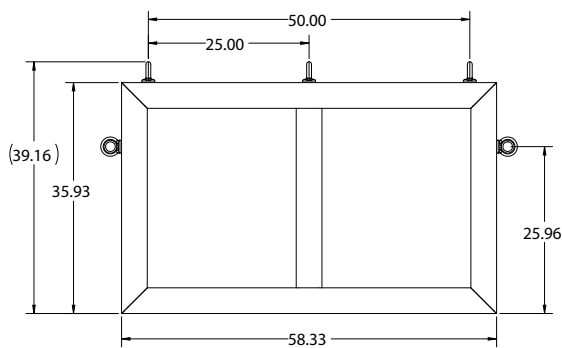
WLL: 1800 lb/818 Kg using 2 rigging points

WLL: 1000 lb/455 Kg using 1 rigging point

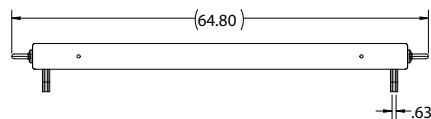
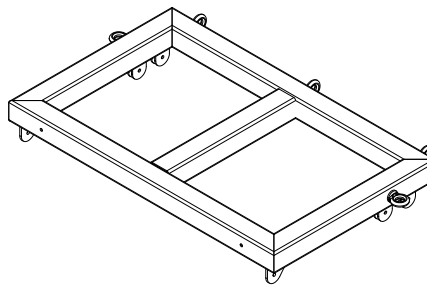
Design Factor: 5:1

PACKAGE CONTENTS:

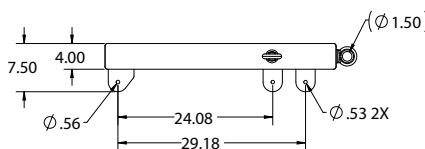
- 1 pc.** Bottom Grid and hardware
- 2 pcs.** Rear links and hardware



Top View



Front View



Side View

Adaptive Technologies Group
1635 E. Burnett Street | Signal Hill, CA 90755 USA
Ph: 562.424.1100 | Fax: 562.424.3520
www.adaptivetechnologiesgroup.com



ALWAYS INSTALL SAFETY CABLES

WARNING: Mounting and/or suspension of audio and video equipment requires experienced professionals. Improperly installed loudspeakers can result in property damage, personal injury and/or liability to the installing contractor.



STEP KIT RS-VLA-i-901SB

3200 lb. WLL

VLA601i to VLA901i STEP BRACKET KIT

RIGGING SYSTEM

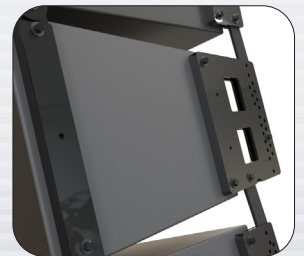


RS-VLA-i-901SB STEP BRACKET KIT

Use this precision manufactured adapter Strap Kit to step down from the longer VLA601i speaker cabinet to the shorter VLA901i speaker cabinet.

This adapter locks in just like the standard Strap Kits using the same interlocking features. Splay angles are also provided via the step bracket where VLA901i cabinets can be tight-packed up to the VLA601i cabinet or splayed out, up to 10 degrees.

Attaching the VLA901i cabinet underneath the VLA601i cabinet provides additional near field coverage.



STANDARD FEATURES:

- ▶ Bridges VLA901i speaker under the VLA601i speaker
- ▶ Supports VLA601i & VLA901i Loudspeakers
- ▶ Secures to upper and lower strap kits
- ▶ Supports Permanent Installations

OPTIONAL ACCESSORIES:

- ▶ See overhead hardware data sheet
- ▶ See wire rope data sheet

SPECIFICATIONS:

Materials: Structural steel
Finish: Powder coat
Color: Black
Tilt Angle: 10° degrees
WLL: 3200 lb / 1455 Kg
Design Factor: 5:1

PACKAGE CONTENTS:

2 pcs. Front Straps and hardware
2 pcs. Rear Straps and hardware
2 pcs. Rear links and hardware

