

ASB Sub-Woofer Cluster Kit



RIGGING FOR JBL ASB SUB-WOOFERS

RIGGING SYSTEM



Cluster Hardware
Overhead Grid sold separately

Complete Family of Adjustable Rigging Components for JBL Professional ASB Sub-Woofer, ideal for use with stadium horns in sports stadiums and concert halls

Adaptive has developed a family of rigging components that enable these cabinets to be assembled together and flown in a line array configuration. Choose from a variety of field proven rigging components to complete your sub array design installation.

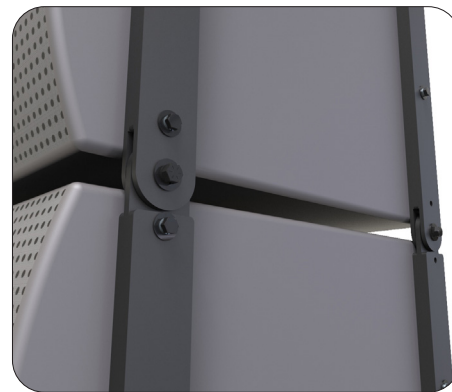
Start with Adaptives Top Fly Grids, which allows them to be suspended vertically.

Interlocking and load-rated Front and Rear Strap kits (B) allow the cabinets to be assembled and locked together, thus directing sound per the venue's acoustic requirements. These Strap Kits also interlock into the Top Fly Bar.

Adaptive's Line Array components are precision built and pre fitted before shipping to assure a trouble-free installation. These components are field proven already and installed in major pro football and university stadiums.



Top Grid (A)



Front / Rear Straps (B)

ALWAYS INSTALL SAFETY CABLES

WARNING: Mounting and/or suspension of audio and video equipment requires experienced professionals. Improperly installed loudspeakers can result in property damage, personal injury and/or liability to the installing contractor.

TOP GRID RS-ASB-TG

2200 lb. WLL

TOP GRID RIGGING GRID FOR ASB 4128, 6128 AND ASB 7128

RIGGING SYSTEM



RS-ASB-TG TOP GRID

The RS-ASB-TG Top Grid assembly will fly up to 10 ASB 4128, ASB 6128 or ASB 7128 sub woofers into a line array configuration. Simply secure the front and rear speaker Straps Kits of the top speaker cabinet permanently underneath the Grid's four load-rated interlocks.

Rigging Rails on the left and right sides of the Grid's frame allow the entire cluster to be suspended and angled via multiple front-to-back rigging points. Place the cluster into a dead hang or tilt it down, up to 10° degrees, in a cardioid scenario.

Two additional hang points are included to make the installation easier, one at the front center and the other at the rear center to be used for hoisting the cluster into position so that the permanent suspension cables can be secured.

This Top Grid is a single steel frame precision-welded assembly that comes in a tough zinc enriched black powder coat finish.

Fly sub arrays behind arrays Universal Grid RS-56X168-UG. See data sheet for more details.



STANDARD FEATURES:

- ▶ Supports up to 10 ASB 4128 & 6128 and 7128 sub woofers
- ▶ Multiple Rigging Points provide up to 10 degree angle down tilt
- ▶ Secure suspension for speakers
- ▶ Supports Permanent Installations

OPTIONAL ACCESSORIES:

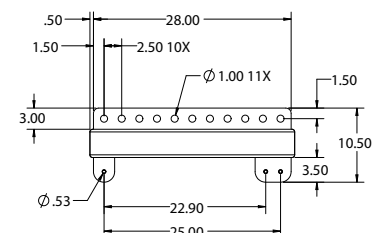
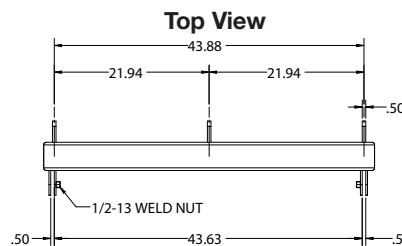
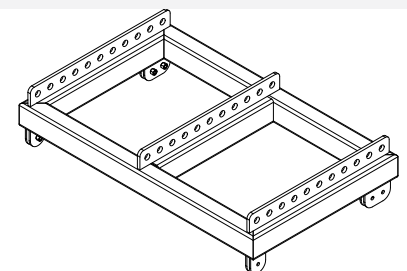
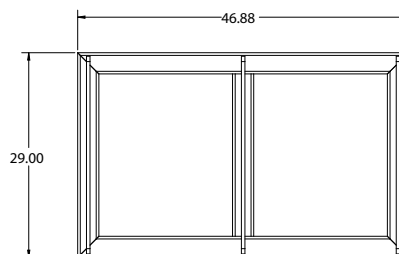
- ▶ See Universal Grid and Ext. RS-56X1168-UG data sheet.
- ▶ See overhead hardware data sheet
- ▶ See wire rope data sheet
- ▶ See safety cable data sheet

SPECIFICATIONS:

Materials: Structural steel
Finish: Zinc Based Powder coat
Color: Black
Tilt Angle: 10° degrees
WLL: 2200 lb / 1000 Kg
Design Factor: 5:1

PACKAGE CONTENTS:

1 pc. Top Grid Frame



Front View

Side View

Adaptive Technologies Group Inc
1635 E. Burnett St. | Signal Hill, CA 90755 USA
Ph: 562.424.1100 | Fax: 562.424.3520
www.adaptivetechgroup.com



ALWAYS INSTALL SAFETY CABLES

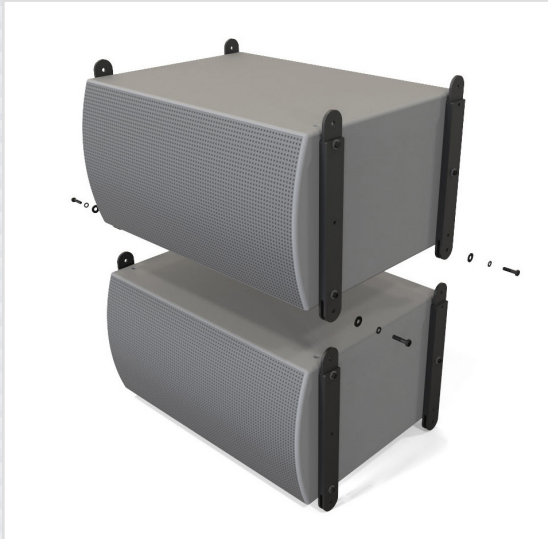
WARNING: Mounting and/or suspension of audio and video equipment requires experienced professionals. Improperly installed loudspeakers can result in property damage, personal injury and/or liability to the installing contractor.

STRAP KIT RS-ASB6/7128-SK

2200 lb. WLL

FRONT & REAR SPEAKER STRAPS FOR ASB SUB WOOFERS

RIGGING SYSTEM



RS-ASB6/7128-SK STRAP KIT

Assemble JBL's ASB sub woofers vertically in the horizontal orientation, up to 10 cabinets in a row using Adaptive's interconnecting Strap Kits.

This relatively easy-to-assemble rigging kit comes with two front connector straps that secure to the fly points at the front of the ASB sub woofers, which interlock into the front straps of the cabinet above and below it.

Two rear Strap Kits also secure to the rear fly points of the speaker which allows the speaker cabinet to interlock with speakers above and below into the tight-pack position.

These Strap kits also connect to the front and rear receptacles of the Top Grid, which provides a safe array structure while allowing the entire array to be tilted in a cardioid scenario when necessary.



Front Strap

Rear Strap

STANDARD FEATURES:

- ▶ Supports ASB 4128, 6128 & 7128 Sub Woofers
- ▶ Bridges between upper and lower speakers
- ▶ Supports Permanent Installations

OPTIONAL ACCESSORIES:

- ▶ See overhead hardware data sheet
- ▶ See wire rope data sheet
- ▶ See safety cable data sheet
- ▶ See Top Grid RS-ASB-TG

SPECIFICATIONS:

Materials: Structural steel
Finish: Zinc Based Powder coat
Color: Black
Tilt Angle: 0-5° degrees
WLL: 2200 lb / 1000 Kg
Design Factor: 5:1

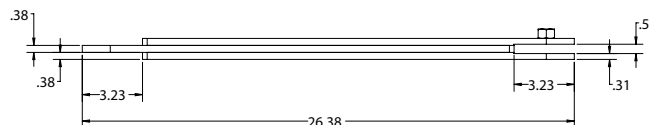
PACKAGE CONTENTS:

2 pcs. Front Straps and hardware
2 pcs. Rear Straps and hardware

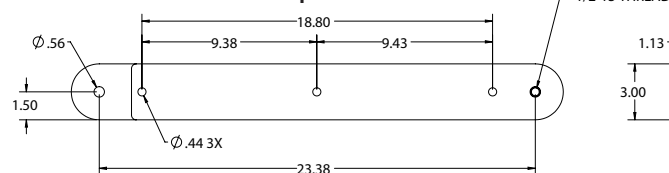


MADE IN USA

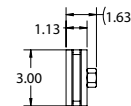
Rated for outdoor use.



Top View



Front View



Side View

Adaptive Technologies Group Inc
1635 E. Burnett St. | Signal Hill, CA 90755 USA
Ph: 562.424.1100 | Fax: 562.424.3520
www.adaptivetechgroup.com



ALWAYS INSTALL SAFETY CABLES

WARNING: Mounting and/or suspension of audio and video equipment requires experienced professionals. Improperly installed loudspeakers can result in property damage, personal injury and/or liability to the installing contractor.