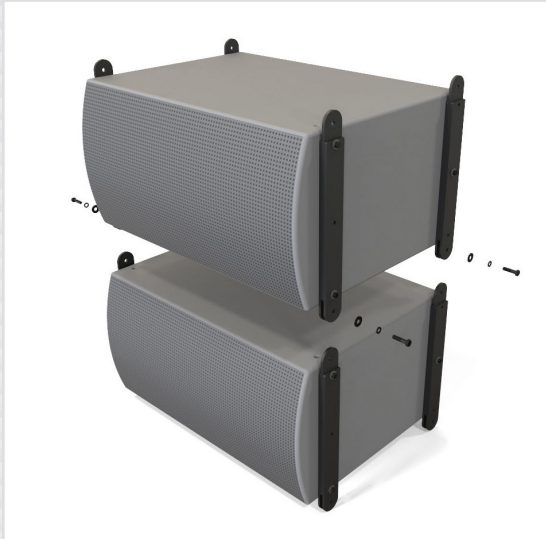


STRAP KIT RS-ASB6/7128-SK

2200 lb. WLL

FRONT & REAR SPEAKER STRAPS FOR ASB SUB WOOFERS

RIGGING SYSTEM



RS-ASB6/7128-SK STRAP KIT

Assemble JBL's ASB sub woofers vertically in the horizontal orientation, up to 10 cabinets in a row using Adaptive's interconnecting Strap Kits.

This relatively easy-to-assemble rigging kit comes with two front connector straps that secure to the fly points at the front of the ASB sub woofers, which interlock into the front straps of the cabinet above and below it.

Two rear Strap Kits also secure to the rear fly points of the speaker which allows the speaker cabinet to interlock with speakers above and below into the tight-pack position.

These Strap kits also connect to the front and rear receptacles of the Top Grid, which provides a safe array structure while allowing the entire array to be tilted in a cardioid scenario when necessary.



Front Strap

Rear Strap

STANDARD FEATURES:

- ▶ Supports ASB 4128, 6128 & 7128 Sub Woofers
- ▶ Bridges between upper and lower speakers
- ▶ Supports Permanent Installations

OPTIONAL ACCESSORIES:

- ▶ See overhead hardware data sheet
- ▶ See wire rope data sheet
- ▶ See safety cable data sheet
- ▶ See Top Grid RS-ASB-TG

SPECIFICATIONS:

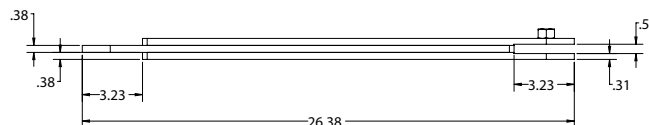
Materials: Structural steel
Finish: Zinc Based Powder coat
Color: Black
Tilt Angle: 0-5° degrees
WLL: 2200 lb / 1000 Kg
Design Factor: 5:1

PACKAGE CONTENTS:

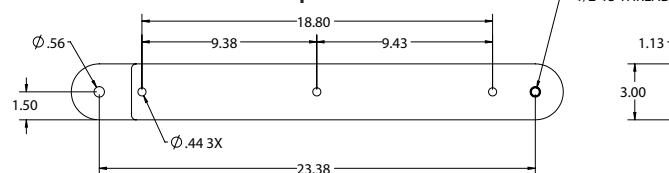
2 pcs. Front Straps and hardware
2 pcs. Rear Straps and hardware



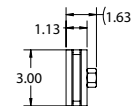
Rated for outdoor use.



Top View



Front View



Side View

Adaptive Technologies Group Inc
1635 E. Burnett St. | Signal Hill, CA 90755 USA
Ph: 562.424.1100 | Fax: 562.424.3520
www.adaptivetechnologiesgroup.com



ALWAYS INSTALL SAFETY CABLES

WARNING: Mounting and/or suspension of audio and video equipment requires experienced professionals. Improperly installed loudspeakers can result in property damage, personal injury and/or liability to the installing contractor.