

PL-7500-SL

24 FT TRAVEL PROJECTOR SCISSOR LIFT

Pro-Lift™

FEATURES:

- Quiet Running
- Dual Electric Winch System
- Remote Wall Switch Actuator
- Repeatable Stop Returns
- Controlled Up/Down Speed
- Three Adjustable Stop Sensors
- Overhead Interface Frame
- Dual Fall Protection
- Projector Wire Management

OPTIONAL ACCESSORIES:

- Standard and Networkable Controllers
- Optional X-Y Projector Interface Kit
- P-BOX-15 Projector Enclosure

SPECIFICATIONS:

MECHANICAL:

Over 24ft of Vertical Travel
Working Load: 500lb / 227kg

DIMENSIONS:

52 in W x 53 in L x 22.5 in H
Weight: 442 lb / 200 Kg

ELECTRICAL:

230V 60 Hz
Single Phase 16A with ground wire.

POWER CONSUMPTION:

1KW at 50 Hz.



Rated for indoor use.

Overview

Shown with XY Interface



Shown with Sound Enclosure

Select Adaptive's Pro-Lift Scissor Lift System to view and stow large format DCI digital projectors from above screening rooms, auditoriums, theaters, etc. Pro-Lift Scissor Lifts are professionally engineered, easy to install, computer controlled and built to UL standards.

Pro-Lift Scissor Lifts come in three frame and chassis sections and are easy to install. The Top Frame anchors up and into a facility in a wide variety of ways. The Lift's chassis then bolts directly to the Top Frame. Multiple adjustable contact switches are set on-site and provide desired high and low projector positions. It's strong electrically powered system then safely lowers the projector, enclosure and other gear weighing up to 500 lb from between 8 and 24 feet overhead, depending on the selected model.

This Lift system comes with a choice of on-board controllers, including the basic self-contained DEC controller and the DEC Plus, which is a network-able device. The Basic DEC self-contained Main Controller is a contact-switch activated device that uses a push-button controller to select up to three elevations, including show, stow and maintenance positions. The DEC Plus network-able Main Controller uses Modbus, a common automation logic, to program multiple elevation positions, communicates with third party show controllers and comes with a separate push button controller. Projectors are installed directly to the scissor assembly via the optional universal-fit XY Interface or enclosed in the optional P-Box-15 Sound Enclosure.

Adaptive Technologies Group
1635 E. Burnett Street | Signal Hill, CA 90755 USA
Ph: 562.424.1100 | Fax: 562.424.3520
www.adaptivetechologiesgroup.com

ALWAYS INSTALL SAFETY CABLES

WARNING: Mounting and/or suspension of audio and video equipment requires experienced professionals. Improperly installed loudspeakers can result in property damage, personal injury and/or liability to the installing contractor.



ADAPTIVE
TECHNOLOGIES GROUP

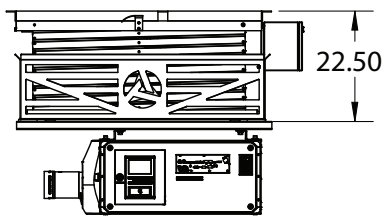
by **Proyecson**

PL-7500-SL

SCISSOR LIFT FOR OVERHEAD PROJECTORS

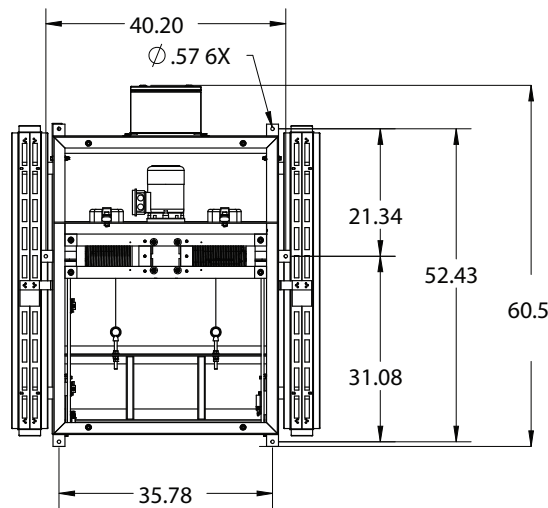
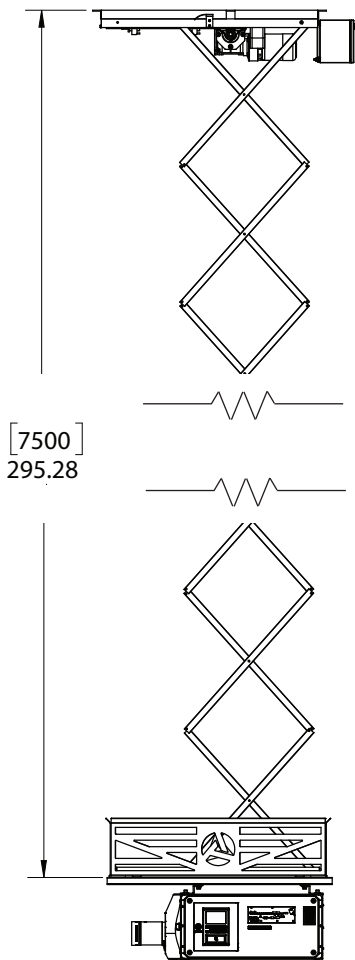
Pro-Lift™

Retracted Position

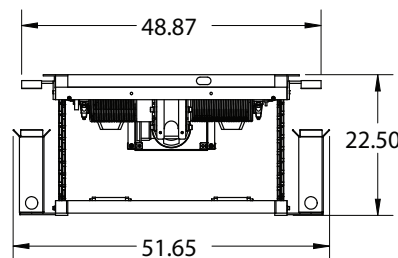


Side View

Extended Position

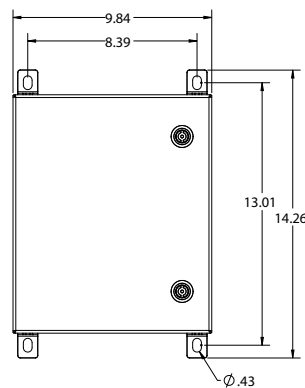


Top View

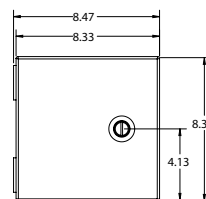


Back View

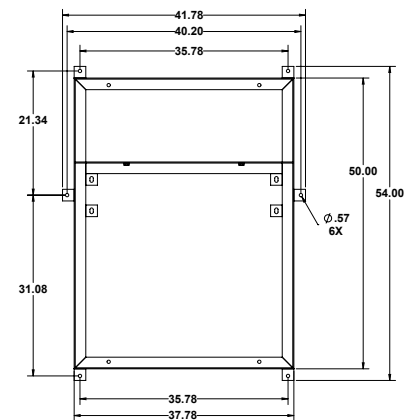
**Control Panel
Front View**



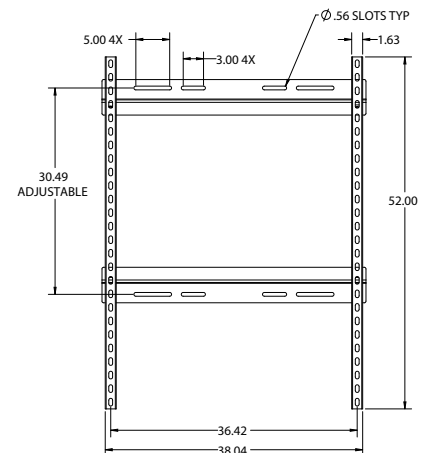
**Wall Switch
Front View**



**Docking Frame
Top View**



X-Y Interface Kit



Mounting the Pro-Lift Scissor Lift:

The installation of the Pro-Lift-Scissor Lift must be reviewed by a building engineer, installed professionally and supervised by an operator. The facility's structure must support a minimum of 1160 lb/528 Kg, which includes the Lift, up to 350 lb/160 Kg of projectors and equipment and up to 216 lb/98 Kg for a sound enclosure.

The Scissor lift comes with a six-point top mounting frame that secures to the overhead structure. The Lift's chassis mounts under the top frame. The scissor assembly and lower frame attaches to projector by way of the universal XY Interface adapter bracket or directly to a sound enclosure.

A choice of controllers including the basic DEC that offers up to three stopping position and the DEC Plus, which is network able with 3rd party show controllers. The selected controller comes mounted to the scissor lift chassis and can be relocated up to 6ft away to a more convenient service location. The remote Up / Down switch comes with a lockable wall mountable enclosure and 30 foot cable extension and connectors.

Adaptive Technologies Group
1635 E. Burnett Street | Signal Hill, CA 90755 USA
Ph: 562.424.1100 | Fax: 562.424.3520
www.adaptivetechologiesgroup.com

ALWAYS INSTALL SAFETY CABLES

WARNING: Mounting and/or suspension of audio and video equipment requires experienced professionals. Improperly installed loudspeakers can result in property damage, personal injury and/or liability to the installing contractor.



ADAPTIVE | **P**
TECHNOLOGIES GROUP by Proyecson™