

MP-1.5NPS-TA

220 lb. WLL

CHANNEL STRUT ADAPTER FOR 1-1/2 INCH PIPE

STRUT ATTACHMENT



STRUT TO PIPE ADAPTER

The MP-1.5NPS-TA is a tube adapter that connects standard 1-1/2" sched-40 NPS pipes to channel strut. This adapter allows speakers and other objects to be mounted under channel strut using standard off the shelf 1-1/2" sched-40 NPS pipes.

The MP-1.5NPS-TA is designed to hold overhead objects with a maximum weight of 220 lbs. Maximum length of 72" long pipe is recommended.



From the overhead structure

KEY FEATURES:

- ▶ For overhead strut applications.
- ▶ Adapts to standard schedule-40 1 1/2" dia. pipe.

OPTIONAL ACCESSORIES:

- ▶ See Threaded Pipe Datasheet
- ▶ See Strut Attachments Datasheet

SPECIFICATIONS:

Materials: Structural Steel
Finish: Powder Coat
Color: Black
Design Factor: 7:1
WLL: 220 lb/ 100 Kg
Shipping Weight: 2.2 lbs / 1 Kg.

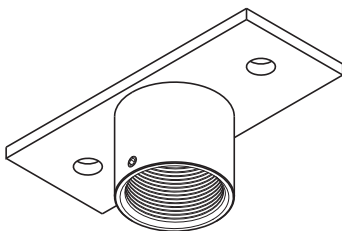
PACKAGE CONTENTS:

1 pc 1 1/2" Tube Adapter
1 pc Sound Isolation Washer
1 pc Flange Bolt 1/2-13X1.5
1 pc Set Screw, 1/4-20
1 pc Sound Isolation Pad
1 pc Channel Retainer Nut 1/2-13

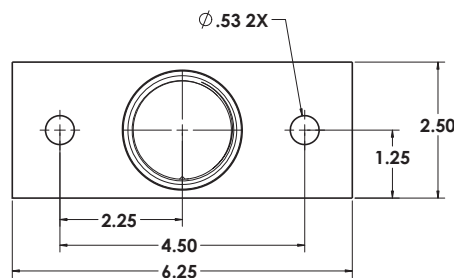


DIMENSIONS:

MP-1.5NPS-TA



Top View



Side View

