

SAS-750-WM

STEERABLE LINE ARRAY WALL MOUNT

750 lb. WLL

STEERABLES®



Wall Mounted Line Array

When rigging line arrays overhead is not practical, use the SAS-750-WM Steerables Line Array Wall Mount to install and aim line arrays up to 28" wide on either side of a stage or building. Line Arrays suspend from their own top grid or it's rigging points, which allow for the desired tilt angle.

Pan angles, up to 90 degrees left or right are achieved by way of an upper cross arm that aims the line array into the desired direction.



STANDARD FEATURES:

- ▶ Permanent line array cabinets up to 28" wide
- ▶ Easy installation – goes up in minutes
- ▶ Provides up to 90 degrees of pan angle
- ▶ Utilizes the Line Array's top grid for down tilt
- ▶ Rugged black powder coat finish

OPTIONAL ACCESSORIES:

- ▶ See overhead hardware data sheet
- ▶ See wire rope data sheet
- ▶ See safety cable data sheet



Side View
0° Rotation

SPECIFICATIONS:

Materials: Structural alloy steel

Finish: Powder coat

Color: Black

Pan Angle: Up to +/- 90 degrees

Tilt Angle: See line array specifications

WLL: 750 lb / 340 Kg

Design Factor: 5:1

Product Weight: 122 lb / 55.5 Kg



MADE IN USA

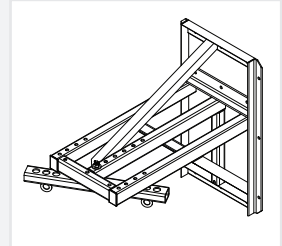


Rated for indoor use.

PACKAGE CONTENTS:

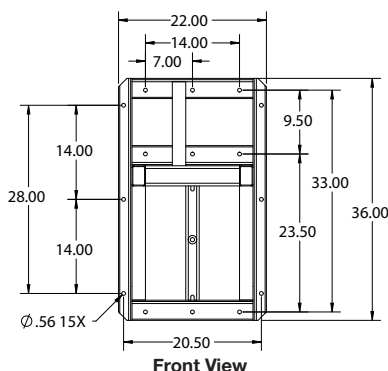
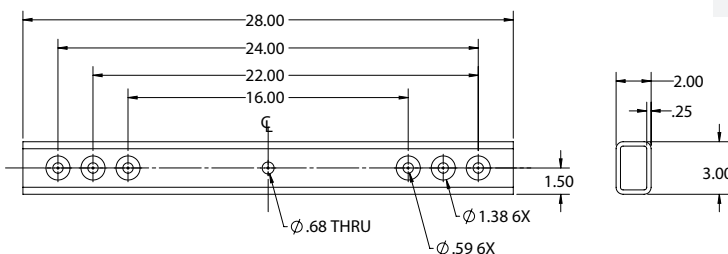
1 pc. Wall Mount Frame

1 pc. Cross Arm Kit

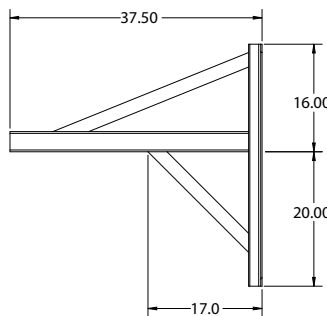


Isometric View

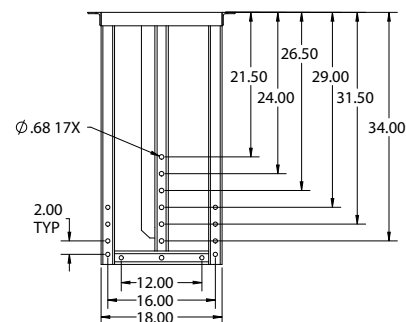
Cross Arm



Front View



Side View



Top View

DIMENSIONS:

ALWAYS INSTALL SAFETY CABLES

WARNING: Mounting and/or suspension of audio and video equipment requires experienced professionals. Improperly installed loudspeakers can result in property damage, personal injury and/or liability to the installing contractor.