

# SAS-100-WM Wall Mounting Arm

## Adjustable Tilt Cable Application

### Installation Instructions

Thank you for selecting the SAS-100-WM speaker wall mount. This universal speaker wall mount is designed to allow the rigging and aiming of speakers, that have mounting points to walls or other safe vertical structures.

#### **Important:**

Mounting and rigging video equipment requires experienced professionals.

**Improperly installed video equipment can result in property damage, personal injury, death and/or liability to the installing contractor.** Do not install if in doubt about the integrity of the mounting structure.

**Follow these instructions for the most efficient and safest mounting results.**

#### **Caution:**

Due to the wide variety of wall structures, materials and mounting methods, these instructions assume that the installing contractor will exercise good judgment in selecting the proper mounting area and hardware.

As a guide, the installation, when completed should be capable of supporting at least 5 times the actual applied load.



#### **Step 1. Attach mounting arm to wall:**

Secure the mounting arm assembly to the wall with the "This End Up" label arrow pointing up. An optional Stud Brace Plate is available to adapt to structural wall studs.

**Model#:**

**WP-16 and WP-24.** Check with your hardware specialist for proper mounting hardware (Figure 1).

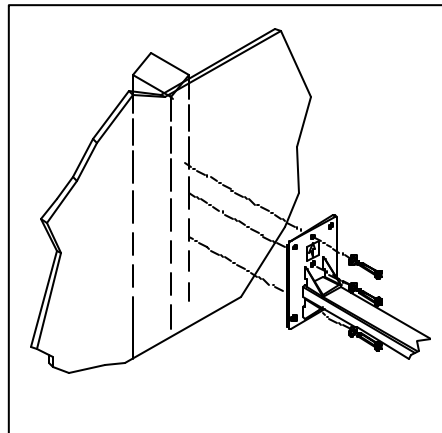
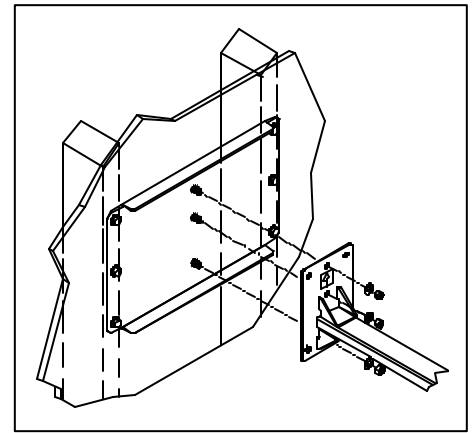


Figure 1



Optional Accessory: Stud Brace Plate

#### **Step 2. Secure Eyebolts:**

Attach eyebolts to cross bar then the end cap (Figure 2A).

Attach eyebolts or required rigging attachments to the speaker cabinet

(Figure 2B)

#### **Step 3. Install Fixed Cables to the Speaker Cabinet:**

Select the fixed cables from the cable kit. Attach one (1) fixed cable to each front attach point of the speaker using the 5/16" shackles. Secure the screw pin to the shackle using the included cable tie (Figure 3).

#### **Step 5. Install Tilt Cable to Speaker Cabinet:**

Capture the eye of the pulley of the adjustable tilt cable kit to the back attach point of the speaker using the 5/16" shackle. Secure the pin to the shackle using the included cable tie (figure 3).

### Step 6. Hang Speaker from Cross Arm:

Attach the eye of the clutch lock of the pulley cable to the loop of one fixed cable and one eyebolt from the SAS-100-WM wall mount with a 5/16" shackle. Attach the other end of the pulley cable to the other fixed cable and SAS-100-WM wall mount eyebolt with a 5/16" shackle (Figure 4). Secure shackle pins with the included tie wraps (Figure 5).

### Step 9. Adjust Pan Angle:

Hold both ends of the cross bar then slightly twist horizontally (clockwise or counter clockwise) until desired direction is achieved (Figure 4).

### Step 10. Adjust Tilt Angle:

Loosen the lock nut on the clutch lock halfway then pull the free end of the adjustable tilt cable up until desired tilt angle is achieved. Tighten lock nut to secure tilt angle. To release tilt angle, loosen the locknut halfway and depress plunger while supporting the weight of the speaker (Figure 6).

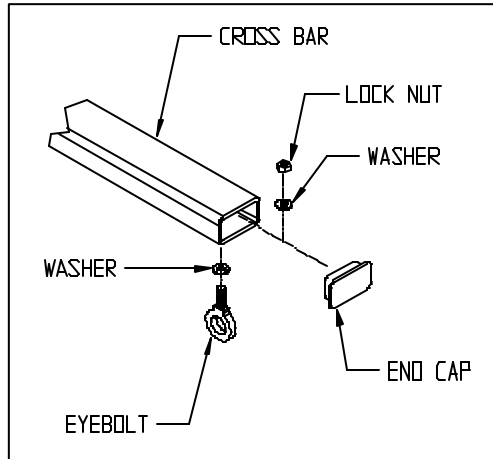


Figure 2A

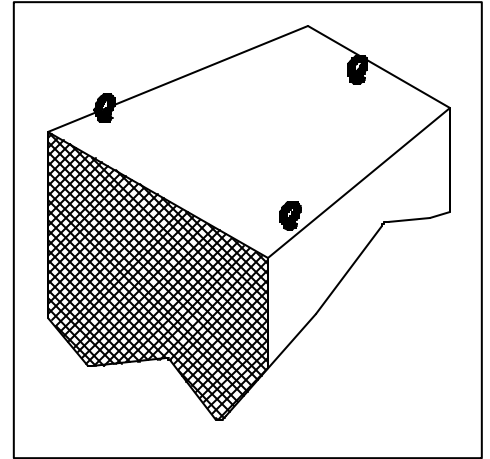


Figure 2B

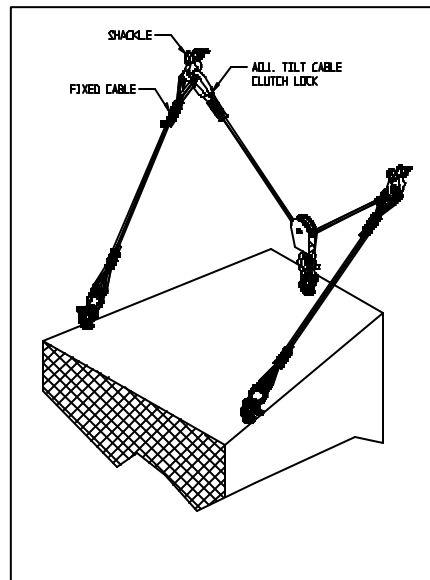


Figure 3

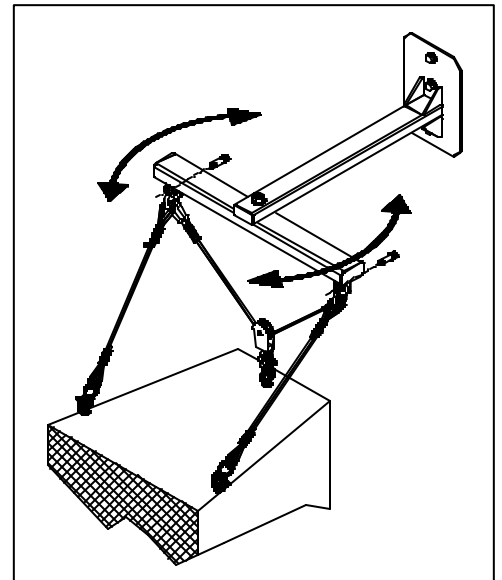


Figure 4

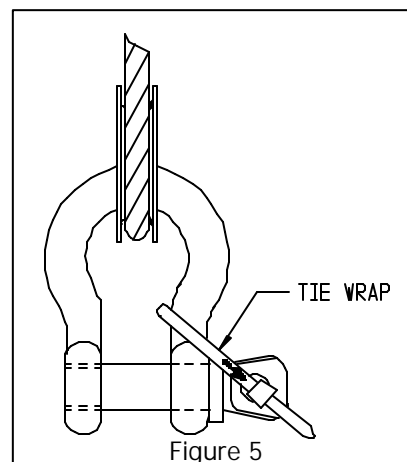


Figure 5

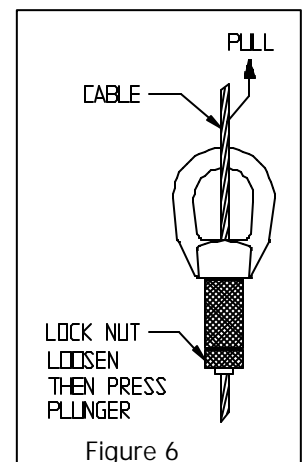


Figure 6



### Allen Products Company Inc.

1635 E. Burnett Street  
Signal Hill, CA 90755 USA  
Tel: (562) 424-1100 Fax: (562) 424-3520  
Web Site: [www.allenproducts.com](http://www.allenproducts.com)