

# MP-1.5NPT-TA

(220 lb. WLL)

CHANNEL STRUT ADAPTER FOR 1-1/2 INCH PIPE

STRUT ATTACHMENT



## STRUT TO PIPE ADAPTER

The MP-1.5NPT-TA is a tube adapter that connects standard 1-1/2" sched-40 NPT pipes to channel strut. This adapter allows speakers and other objects to be mounted under channel strut using standard off the shelf 1-1/2" sched-40 NPT pipes.

The MP-1.5NPT-TA is designed to hold overhead objects with a maximum weight of 220 lbs. Maximum length of 72" long pipe is recommended.



### KEY FEATURES:

- ▶ For overhead strut applications.
- ▶ Adapts standard schedule-40 1/2" pipe.

### OPTIONAL ACCESSORIES:

- ▶ See Threaded Pipe Datasheet
- ▶ See Strut Attachments Datasheet

### SPECIFICATIONS:

**Material:** Structural Steel

**Finish:** Powder Coat

**Color:** Black

**Design Factor:** 7:1

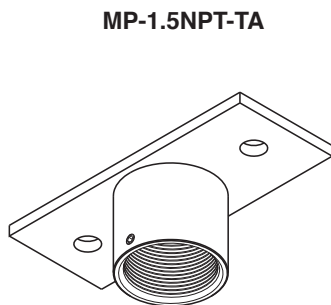
**WLL:** 220 lbs / 100 Kg.

**Shipping Weight:** 2.2 lbs / 1 Kg.

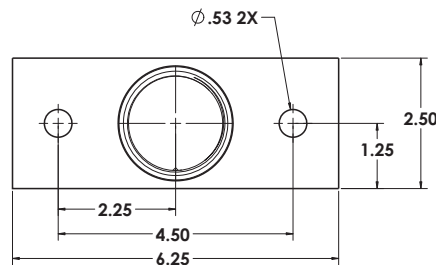
### PACKAGE CONTENTS:

- 1 pc** 1 1/2" Tube Adapter
- 2 pcs** Sound Isolation Washer
- 2 pcs** Flange Bolt 1/2-13X1.5
- 1 pc** Set Screw, 1/4-20
- 1 pc** Sound Isolation Pad
- 2 pcs** Channel Retainer Nut 1/2-13

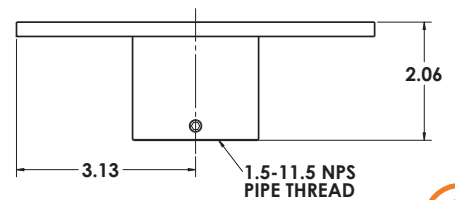
### DIMENSIONS:



Top View



Side View



Rated for indoor use.

#### ALWAYS INSTALL SAFETY CABLES

**WARNING:** Mounting and/or suspension of audio and video equipment requires experienced professionals. Improperly installed loudspeakers can result in property damage, personal injury and/or liability to the installing contractor.