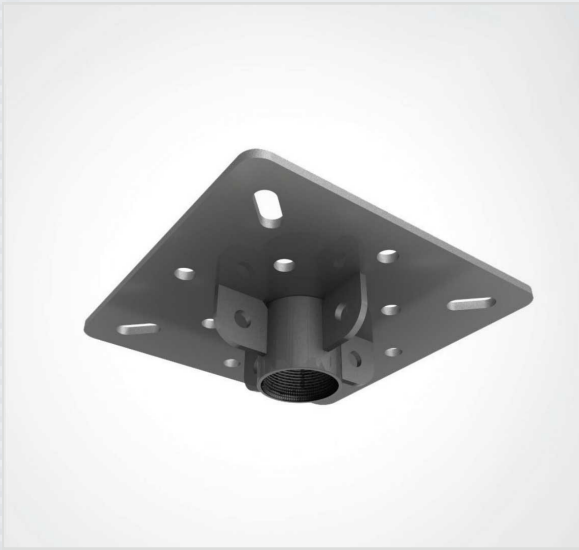


MP-150-115-CM

454 lb. WLL

CEILING PLATE FOR 1-1/2" DIA. SCHED-40 THREADED PIPE

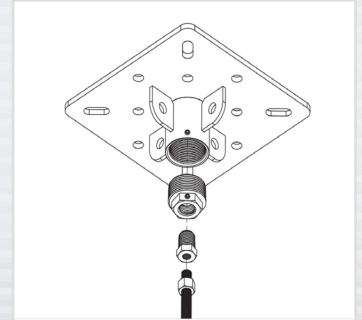
CEILING ATTACHMENT



CEILING MOUNT

The MP-150-115-CM attaches audio and video mounts to flat ceiling or structures. This ceiling mount assembly accepts a standard 1-1/2"-11.5 NPT pipe. With the added reducer bushing adapters, it accepts 1/2-14 NPT and 1/2-13 threaded rods.

The MP-150-115-CM is designed to hold overhead speakers with a maximum weight of 454 lbs.



KEY FEATURES:

- ▶ For overhead audio & video applications.
- ▶ Adapts to standard schedule-40 1-1/2" pipe and to schedule-40 1/2" pipe (using the incl. pipe reducer).

OPTIONAL ACCESSORIES:

- ▶ See Threaded Rod Datasheet

SPECIFICATIONS:

Material: Structural Steel
Finish: Powder Coat
Color: Black
Design Factor: 7:1
WLL: 454 lbs / 206 Kg
Shipping Weight: 7.0 lbs / 3.18 Kg

PACKAGE CONTENTS:

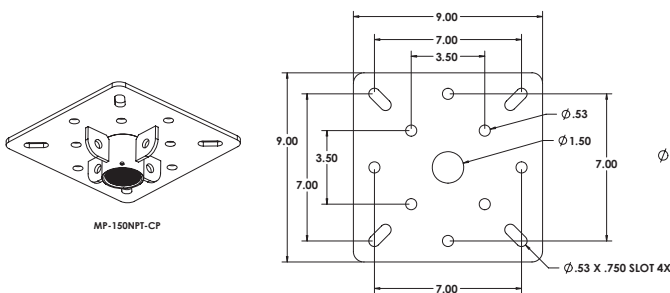
1 pc Ceiling Mount
1 pc 1-1/2" to 1/2-14 NPT pipe reducer bushing/adaptor
1 pc 1/2-14 to 1/2-13 thread reducer bushing/adaptor
2 pcs Set Screw, 1/4-20



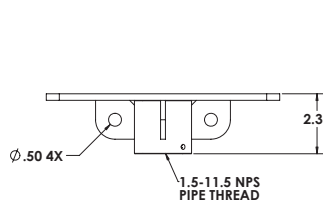
DIMENSIONS:

MP-150-115-CM Ceiling Plate

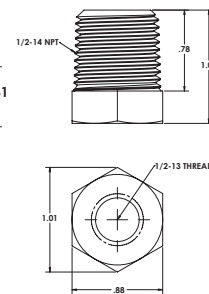
Top View



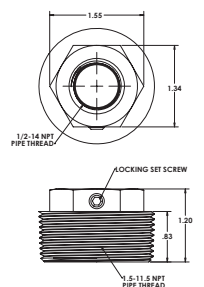
Side View



1/2 NPT - 1/2-13 Reducer



1 1/2 - 1/2 NPT Reducer



ALWAYS INSTALL SAFETY CABLES

WARNING: Mounting and/or suspension of audio and video equipment requires experienced professionals. Improperly installed equipment can result in property damage, personal injury and/or liability to the installing contractor.