

# SAS-500-WM

# 500 lb. WLL

## STEERABLE LINE ARRAY WALL MOUNT

## STEERABLES



The Steerables Line Array Wall Mount installs and aims line arrays on either side of a stage or building. It's heavy black powder-coated steel framework assures safe installations and installs permanently. Line Arrays suspend from their own overhead rigging points, which allows for the desired tilt angle. Pan angles, up to 45 degrees left or right are achieved by way of an upper cross arm to aim the line array into the desired angle. An outdoor version, the SAS-500-WM-G, comes in a weather rated galvanized finish.



### STANDARD FEATURES:

- ▶ Permanently supports small & mid-size line arrays
- ▶ Easy installation – goes up in minutes
- ▶ Provides up to 45 degrees of pan angle
- ▶ Utilizes the Line Array's grid for down tilt
- ▶ Rugged black powder coat finish

### OPTIONAL ACCESSORIES:

- ▶ See overhead hardware data sheet
- ▶ See wire rope data sheet
- ▶ See safety cable data sheet

### SPECIFICATIONS:

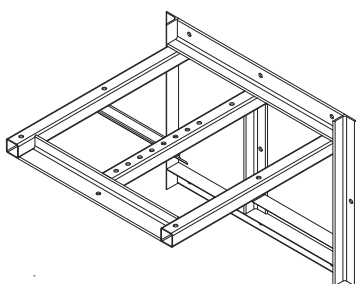
**Materials:** Structural alloy steel shapes  
**Finish:** Powder coat  
**Color:** Black  
**Pan Angle:** Up to +/- 45 degrees  
**Tilt Angle:** See line array specifications  
**WLL:** 500 lb./227 Kg  
**Design Factor:** 5:1  
**Product Weight:** 72 lb / 32.7 Kg

### PACKAGE CONTENTS:

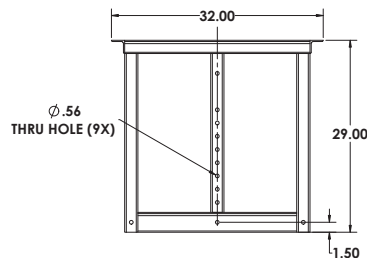
- 1 pc.** Steerables Wall Mount Frame
- 1 pc.** Cross Arm Kit



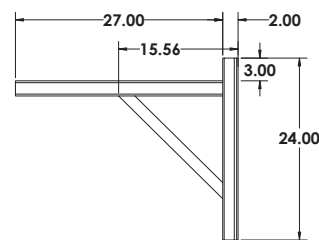
### DIMENSIONS:



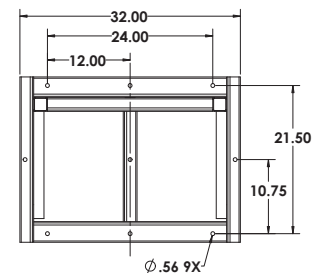
Isometric View



Top View



Side View



Front View

**Adaptive Technologies Group**  
1635 E. Burnett Street | Signal Hill, CA 90755 USA  
Ph: 562.424.1100 | Fax: 562.424.3520  
www.adaptivetechologiesgroup.com



### ALWAYS INSTALL SAFETY CABLES

**WARNING:** Mounting and/or suspension of audio and video equipment requires experienced professionals. Improperly installed loudspeakers can result in property damage, personal injury and/or liability to the installing contractor.